

Serious
Violence
Strategy

The logo for the Manchester Community Safety Partnership is centered within a large, stylized yellow bracket shape. The text "Manchester Community Safety" is written in a bold, white, sans-serif font, stacked in three lines. Below this, the word "PARTNERSHIP" is written in a smaller, white, all-caps, sans-serif font.

**Manchester
Community
Safety**

PARTNERSHIP

Serious Violence Nationally and Locally

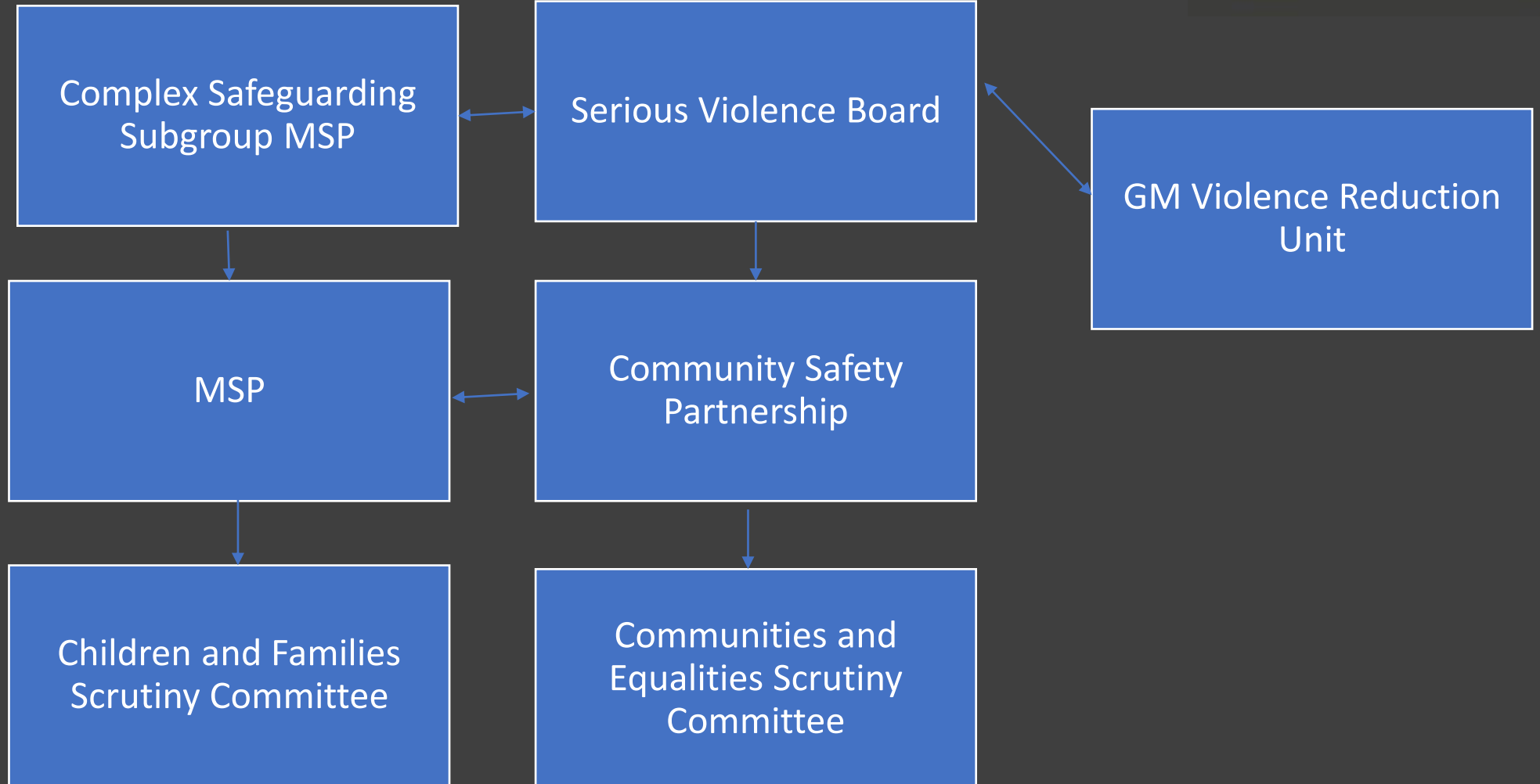


- National Serious Violence Strategy
 - Public Health Approach
- Greater Manchester Violence Reduction Unit
- Serious Violence Duty - 31st January 2023

Locally

- Developing work to address challenges
- Established strong partnership approach for Manchester
- Governance through Serious Violence Board

Governance and connectivity



Serious Violence in Manchester



- A quarter of all Greater Manchester's homicides and serious assaults happened in the City of Manchester
- Hotspot areas – City Centre and areas of high footfall, hospital sites and HMP Manchester
- The City Centre as a driver of serious violence has been underlined by the impact of pandemic restrictions
- There are strong correlations between deprivation and level of serious violence
- Links between victims and perpetrators
- Victims and Perpetrators also come from outside Manchester

Serious Violence in Manchester



Young people and Serious Violence :-

- Over the last 3 years
 - 12% victims of serious violence under 18
 - 14% suspects linked to serious violence under 18
 - 18-25 yr olds account for 25% victims and 27% suspects linked to SV
- Whilst U18 linked to small share of SV the risk for Manchester Residents between 15-17 years old (when calculated by rate of population) is high
- For young people incidents of serious violence mostly occur outside city centre
- The relationship with areas of deprivation is particularly acute for children linked to SV
- Adverse childhood experiences / trauma

Community Safety Partnership Serious Violence Strategy



- Consultation 2021/22
 - Partners, community led work, children
 - MMU ACES Research
 - Our Year consultation
 - High Priority for residents
 - Tackle root causes not presentation
 - Adverse Childhood Experiences and trauma/
 - Disproportionality
- Learning from Reviews
 - Significant characteristics
 - Joining up work across services
 - Treat encounters with U18s as children first
 - Importance of work in school
 - Think Family
 - JTAI



Priority areas of activity

Early Intervention and Prevention

WE WILL

- Identify opportunities to intervene
- Work in with a Trauma informed approach
- Support and promote inclusion
- Identify and challenge disproportionality
- Work in Schools and Education settings

Supporting and protect

WE WILL

- Identify key workers to provide consistent support to those who need it
- Think Family – work with individuals in the context of their families and communities
- Prioritise transitions so support does not disappear

Disrupt, Divert and Enforce

WE WILL

- Work in Partnership to ensure that we recognise those vulnerable to exploitation and link to support services
- Target enforcement to those who are exploiting others / persistent offenders

Implementation Plan

June/July 2023



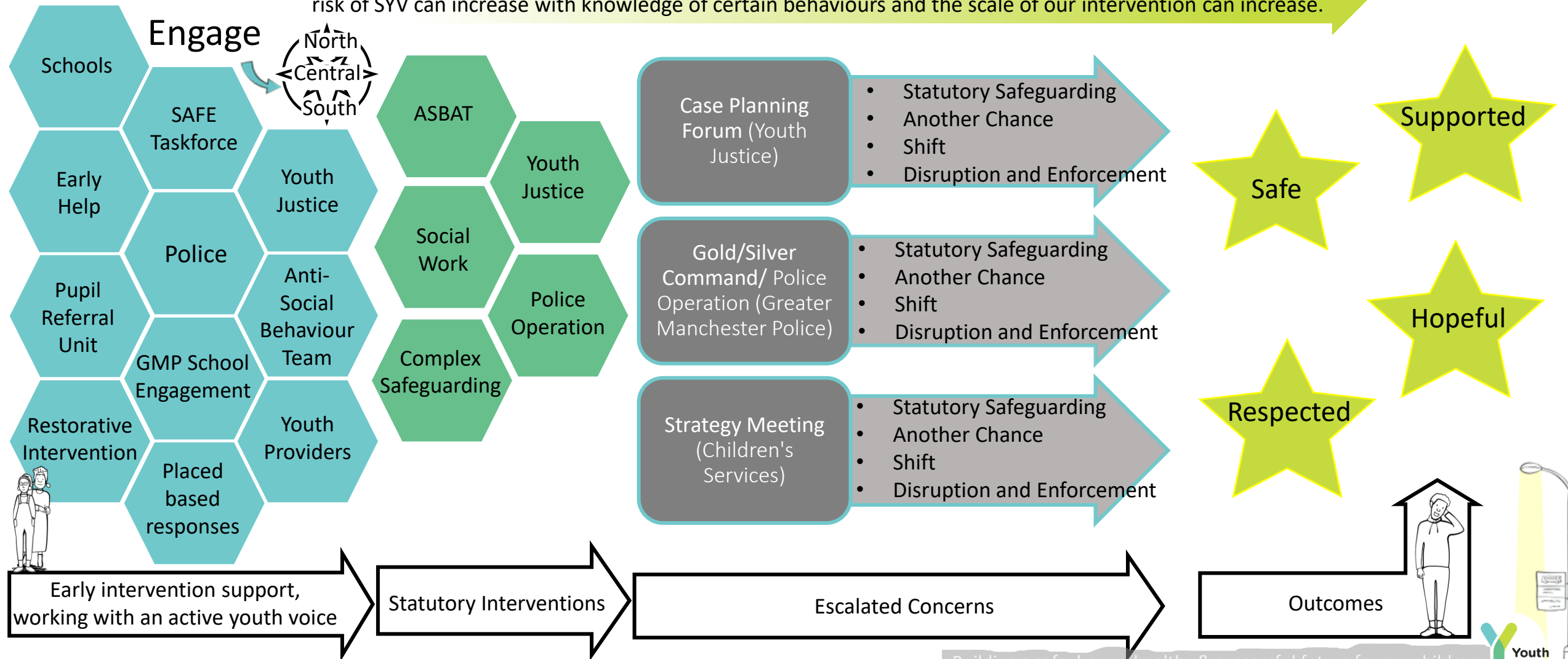
- 3 workshops across the City of Manchester
 - North
 - Central
 - South
- Focus on connection of strategic priorities to frontline practice:-
 - GMP
 - Youth Justice
 - Probation
 - Early Help / Children's Services / Complex Safeguarding
 - Education
 - Health (including GMMHS)
 - GMFRS
 - Local VCS organisations
 - ASBAT
- Action Plan owned by Serious Violence Board

Serious Youth Violence Framework – Our Partners

We take a preventative approach to mitigating the risk of children's involvement in SYV. Our multi-agency method and holistic approach means any partner who has established a trusted relationship with the young person can lead on their intervention.

The scale of intervention

As the risk to the child decreases, we can reduce the scale of intervention required. Concurrently, concerns for the risk of SYV can increase with knowledge of certain behaviours and the scale of our intervention can increase.



Measures of Success

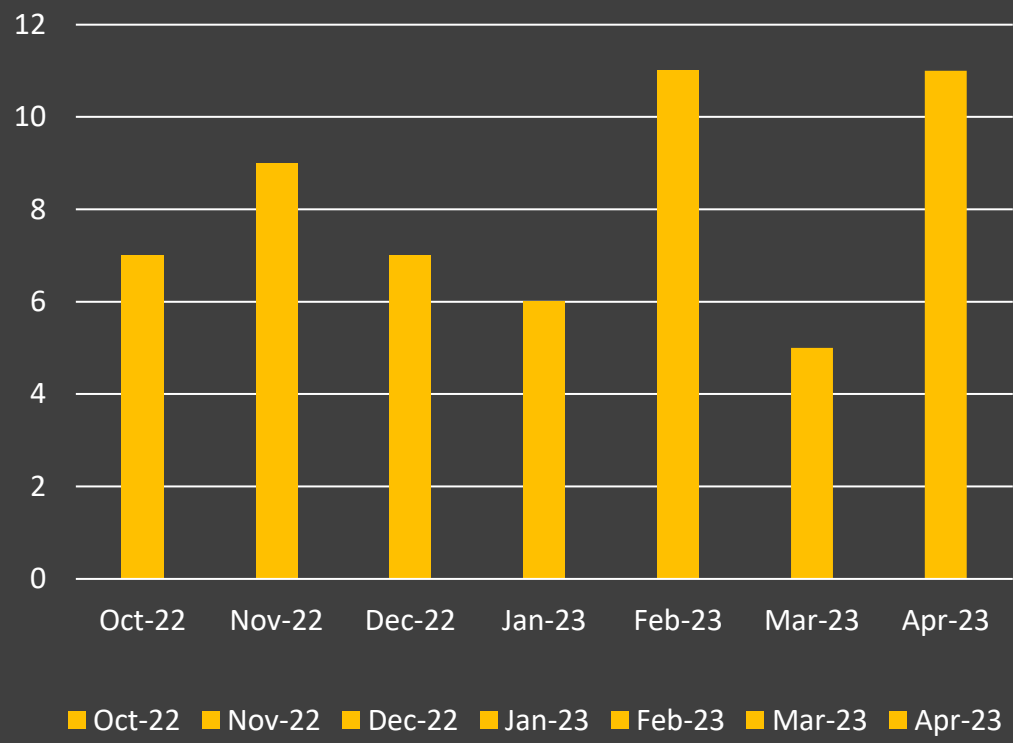
The Serious Violence Duty requires specified authorities to review their strategy on an annual basis.

Opportunity to review data as well as start to measure impact :-

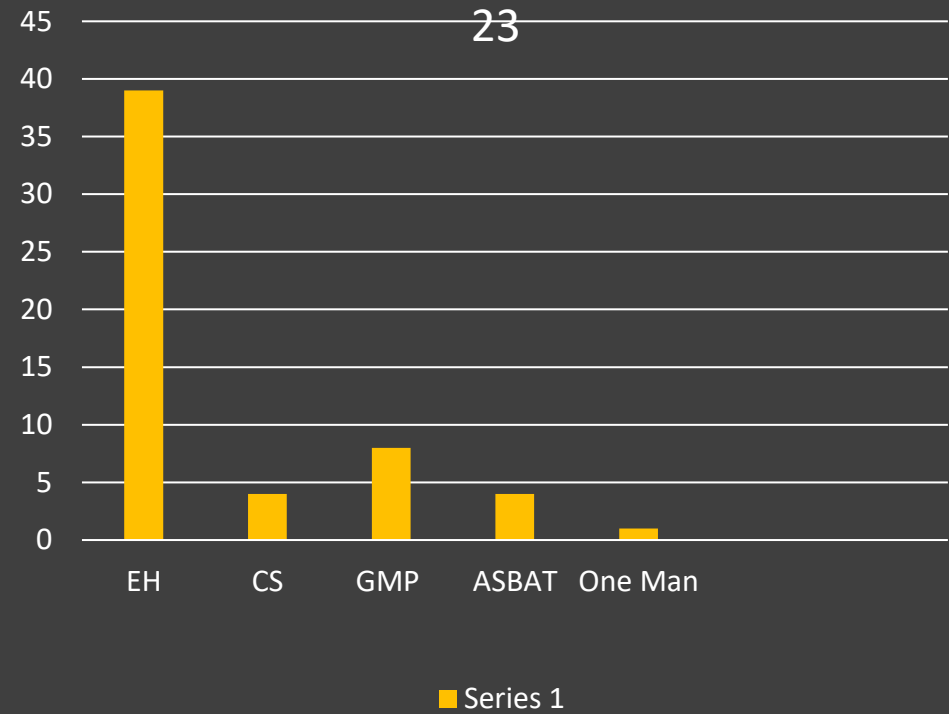
- Harm Reduction
- Feedback from communities including young people
- Safety Perception Survey
- Delivery against commitments

Measures of Success – North Engage

Number of referrals

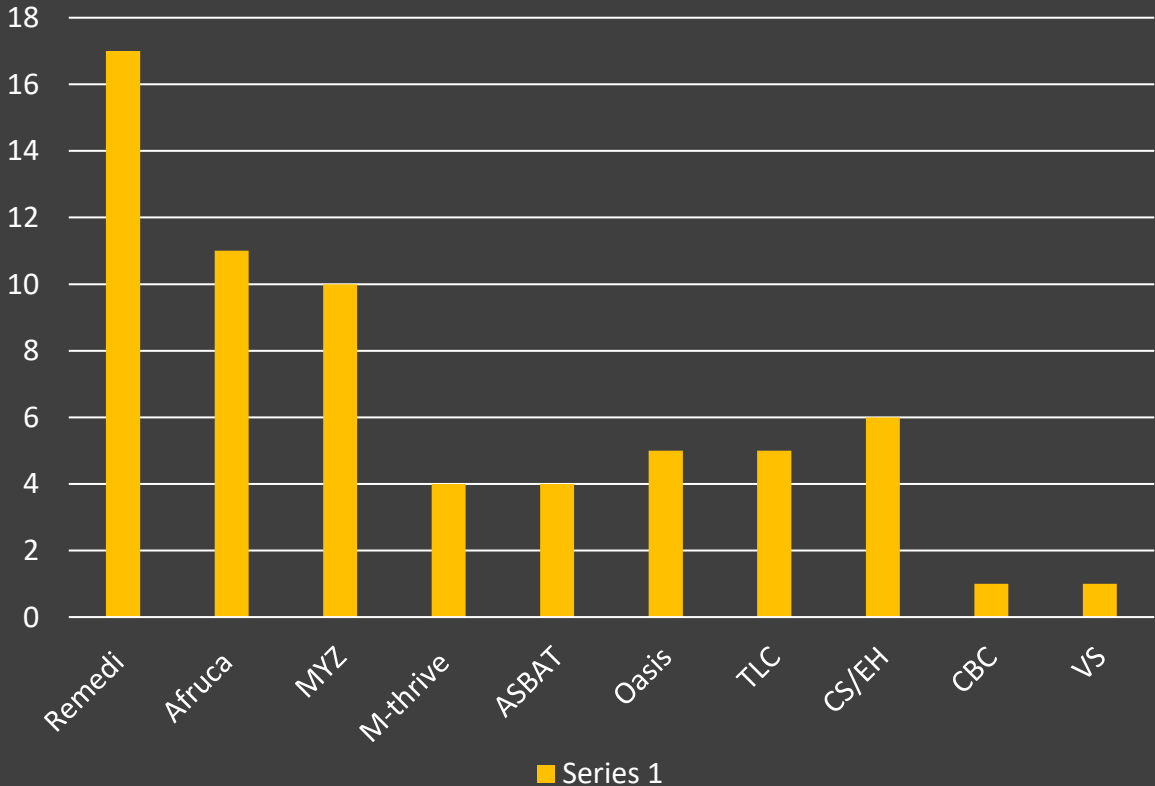


Referring Agencies – October 22– April



Measures of Success – North Engage

Partner interventions



October 22 – 5 / 7 young people did not commit any further ASB or come to the attention of GMP following intervention.

November 22 – 6/8 young people did not commit any further ASB or come to the attention of GMP following intervention.



Questions ?